

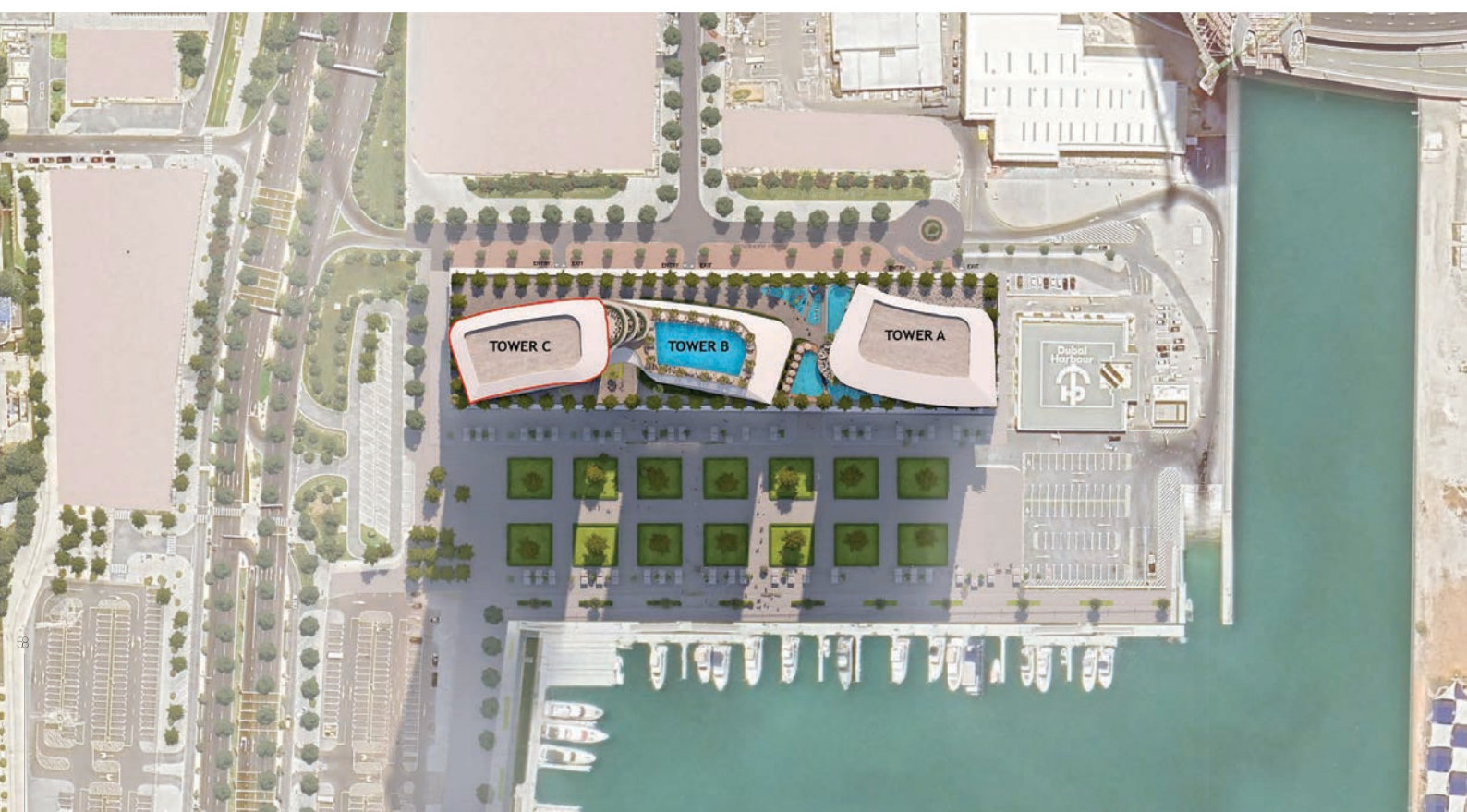
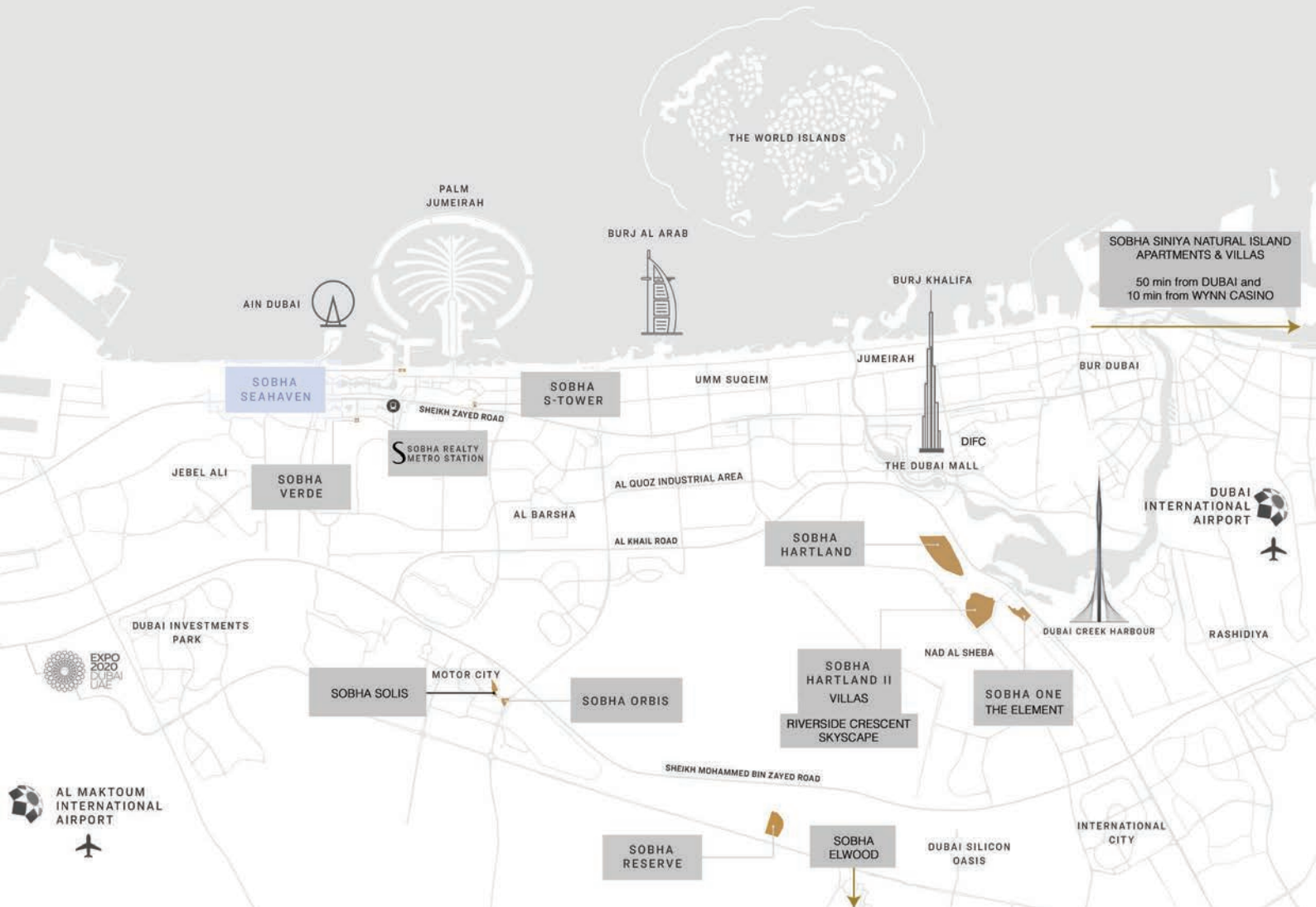


## SOBHA SEAHAVEN

Completion: Tower A - ± **December 2026** Tower B & C - ± **August 2027**  
1, 2, 3 Bedroom Apartments & 5,6 Bedroom Penthouses  
from **AED 4.52 M\*** - **AED 158.59 M\*** \*Subject to availability

Flexible payment plans

Projected returns: **10% - 15%**



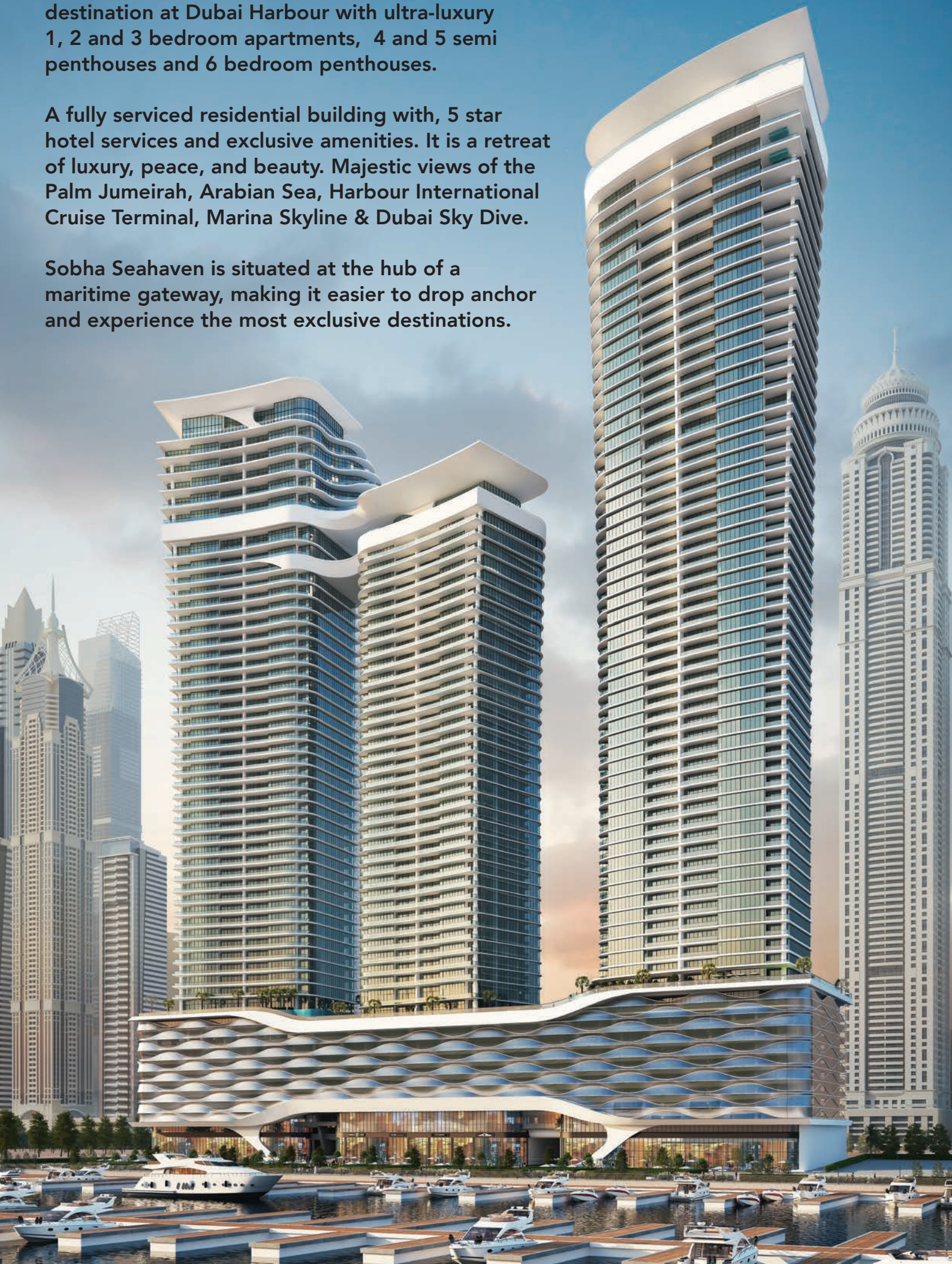
Site Plan

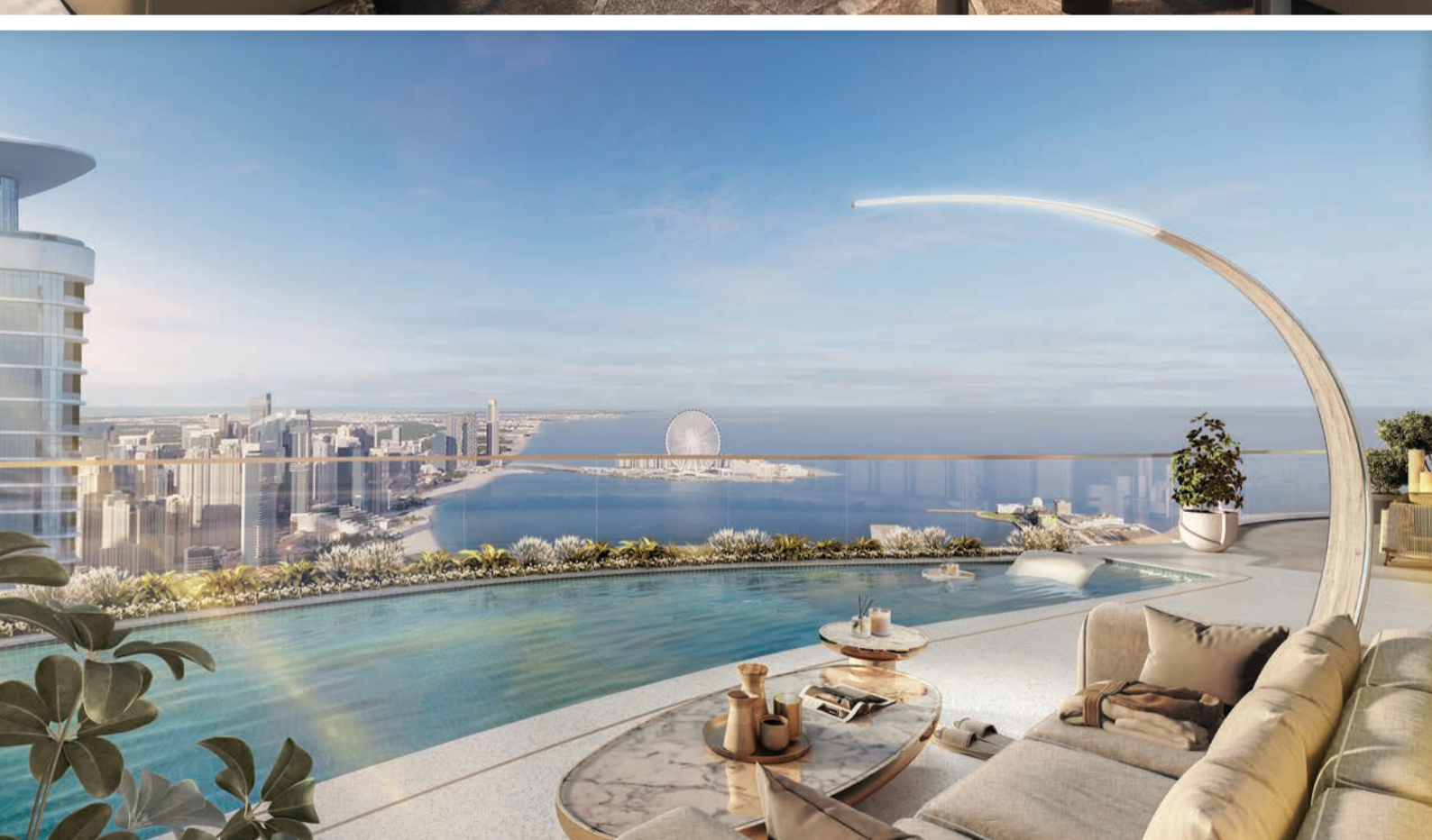


**Sobha Seahaven is a premium sea-facing destination at Dubai Harbour with ultra-luxury 1, 2 and 3 bedroom apartments, 4 and 5 semi penthouses and 6 bedroom penthouses.**

**A fully serviced residential building with, 5 star hotel services and exclusive amenities. It is a retreat of luxury, peace, and beauty. Majestic views of the Palm Jumeirah, Arabian Sea, Harbour International Cruise Terminal, Marina Skyline & Dubai Sky Dive.**

**Sobha Seahaven is situated at the hub of a maritime gateway, making it easier to drop anchor and experience the most exclusive destinations.**







## AMMENITIES

- Club Lounge (Serviced)
- Outdoor Cinema
- Multipurpose Hall
- Indoor Games Area
- Skate Park
- Kid's Playroom
- Outdoor Kid's Play area
- Valet & Concierge Service
- Laundry Service
- Walking/Jogging Track
- Aerobic Zone
- Yoga Zone/ Meditation Zone
- Health Club with Steam & Sauna

- Infinity Edge Swimming Pool overlooking the Arabian Sea
- F & B Retail Along Park & Dubai Harbour

### MASTER COMMUNITY AMENITIES

- Cruise Terminal & The Largest Marina in GCC region
- Retail Mall
- Public Beaches
- Leisure & Entertainment
- Hospitality
- Community Facilities

# APARTMENT FEATURES

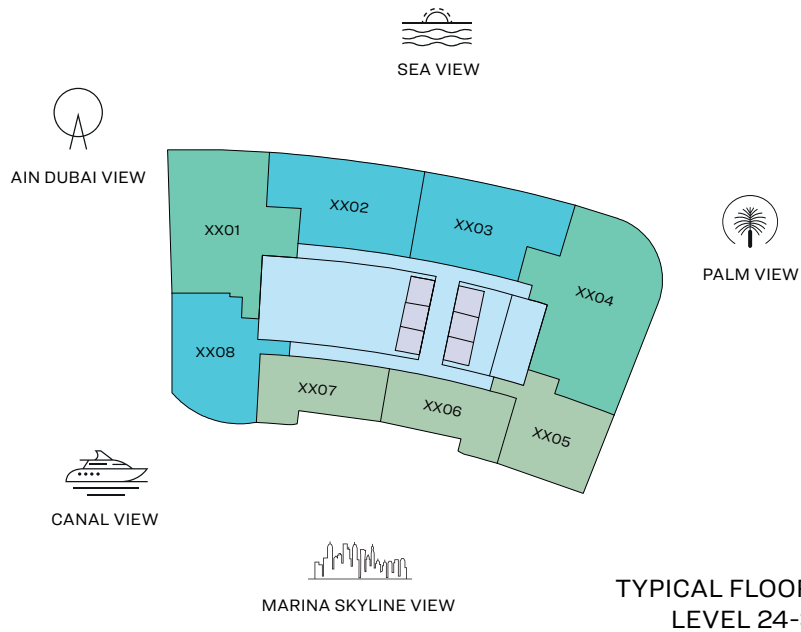
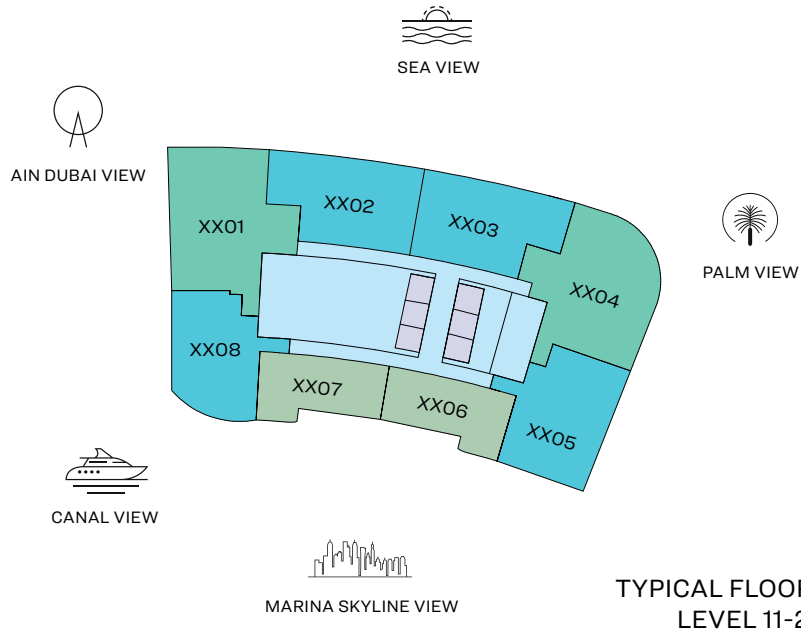
1, 2, 3 Bedroom Apartments & 5,6 Bedroom Penthouses:

- Panoramic balconies
- Spacious living and dining rooms
- Porcelain tiles in all living areas
- Fully fitted kitchen with State of art home appliances (Miele)
- Soundproof bedrooms
- Leatherette & rich veneer finished wardrobes
- Additional maid / study room on various plans
- Floor to Floor height of 3.6 meters
- Smart Home automation enabled
- Flexi track lighting
- Smart WC



# FLOOR PLAN LAYOUT

## TOWER A



- 1 BED UNIT
- 3 BED UNIT
- LIFTS
- 2 BED UNIT
- LOBBIES, CORRIDORS & STAIRS

Disclaimer: 1. All dimensions are in metric, measured to wall finishes. 2. All materials, dimensions & drawings are approximate. 3. Information is subject to change without notice, at developer's absolute discretion. 4. Actual area may vary from the stated area. 5. Drawing are not to scale. 6. All images used are for illustrative purpose only and do not represent the actual size, features, specifications, fittings and furnishings. 7. The developer reserves the right to make revisions/ alterations, at its absolute discretion, without any liability whatsoever.

**1 BEDROOM APARTMENT**  
**TYPE A (with powder room + balcony)**

**TOTAL SALEABLE AREA**  
 SUITE = 793.30 SQ.FT.  
 BALCONY = 68.67 SQ.FT.  
 TOTAL = 861.97 SQ.FT.



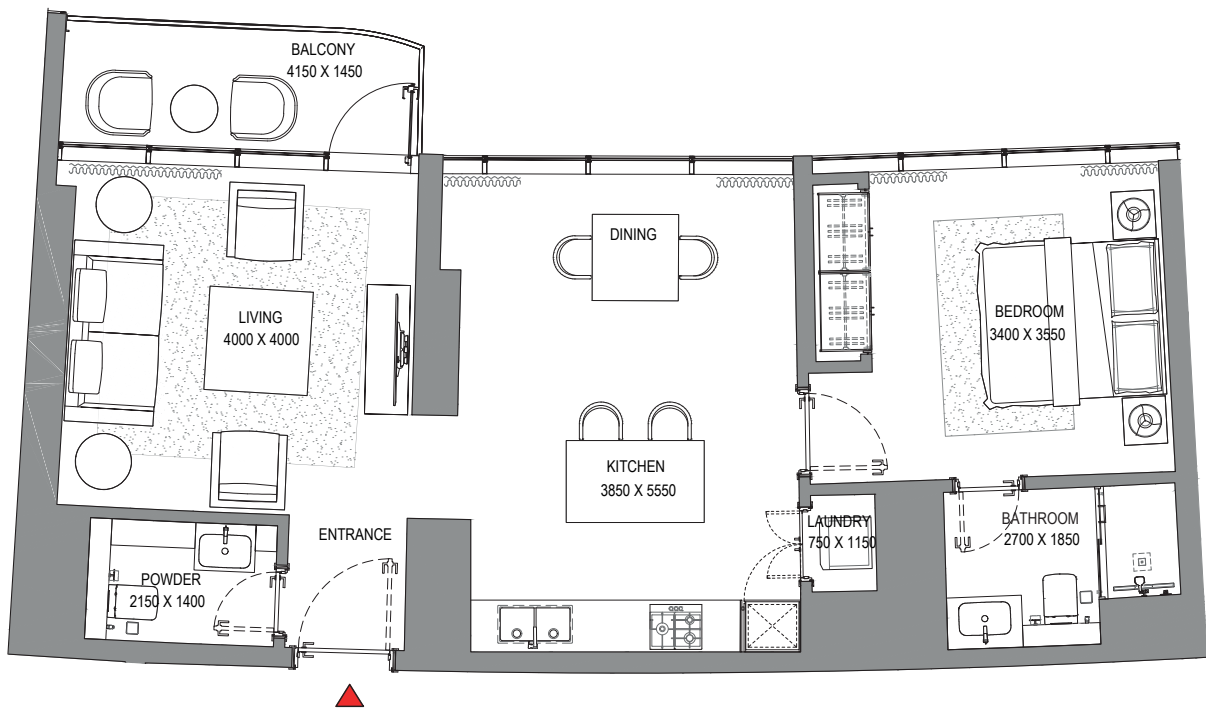
TYPICAL FLOOR PLAN  
 LEVEL 11-32

**1 BED**

**SIZE:** 1130 - 1244 sq. ft.

**PRICE:** From 4.52M - 5.59\* AED

\*Subject to availability



List of unit numbers with this unit plan:

**VIEWS**

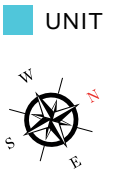
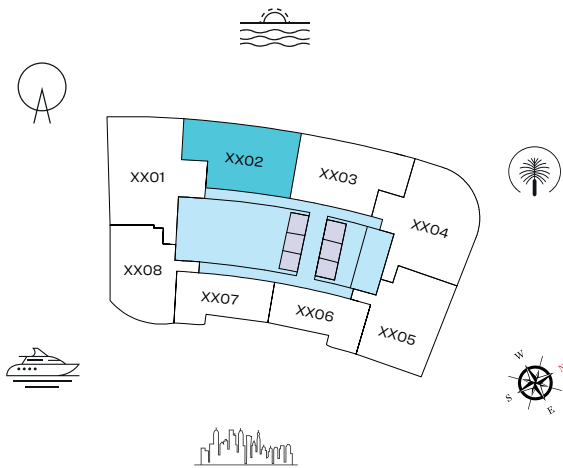
**Marina Skyline**  
 1106

**Marina, Marina Skyline**  
 1206, 1306, 1406, 1506, 1606, 1706, 1806, 1906, 2006, 2106, 2206, 2306, 2406, 2506, 2606, 2706, 2806, 2906, 3006, 3106, 3206

Disclaimer: 1. All dimensions are in metric, measured to wall finishes. 2. All materials, dimensions & drawings are approximate. 3. Information is subject to change without notice, at developer's absolute discretion. 4. Actual area may vary from the stated area. 5. Drawing are not to scale. 6. All images used are for illustrative purpose only and do not represent the actual size, features, specifications, fittings and furnishings. 7. The developer reserves the right to make revisions/ alterations, at its absolute discretion, without any liability whatsoever.

**2 BEDROOM APARTMENT**  
**TYPE A (with powder room + balcony)**

**TOTAL SALEABLE AREA**  
 SUITE = 1,225.79 SQ.FT.  
 BALCONY = 230.89 SQ.FT.  
 TOTAL = 1,456.68 SQ.FT.



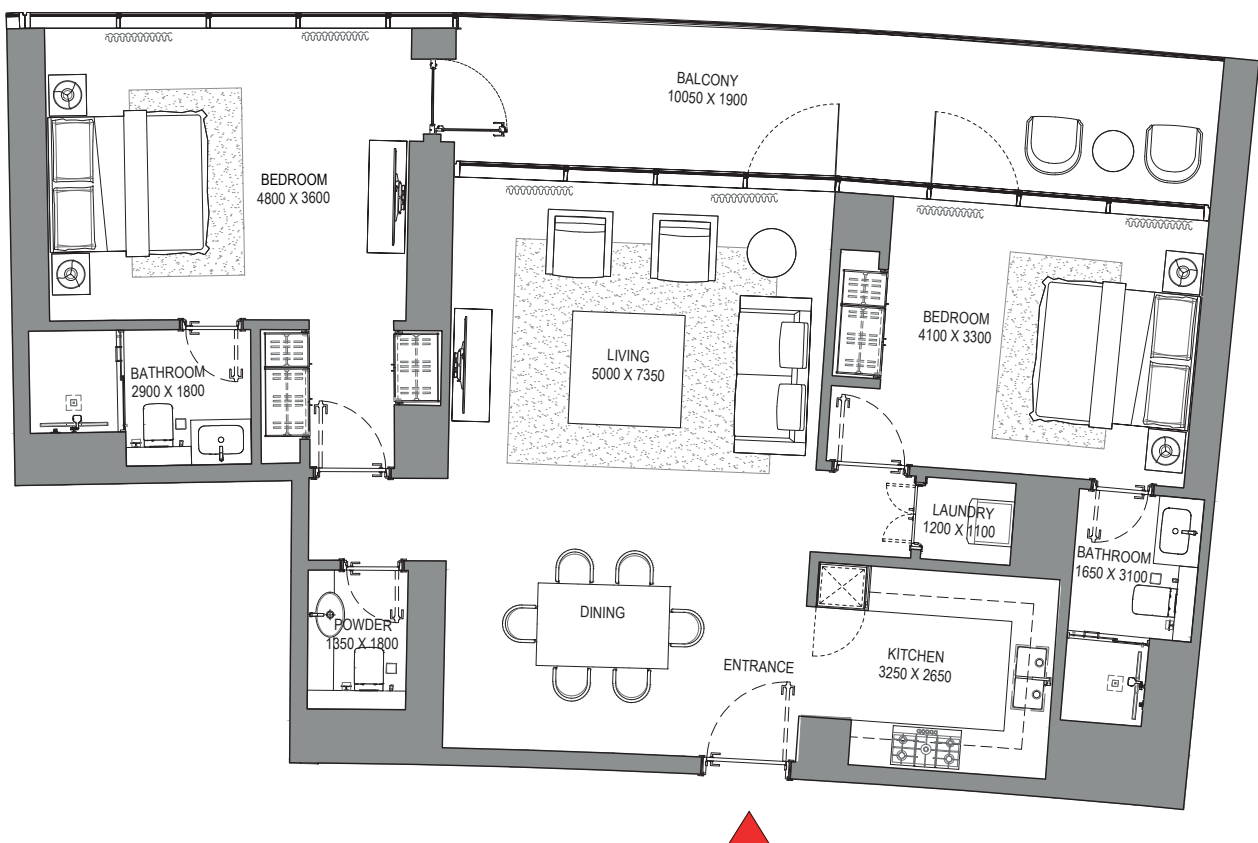
TYPICAL FLOOR PLAN  
 LEVEL 11-32

**2 BED**

**SIZE:** 1716 - 1786 sq. ft.

**PRICE:** From 6.35M - 7.68\* AED

\*Subject to availability



List of unit numbers with this unit plan:

**VIEWS**

Blue waters, Ain Dubai, Palm Jumeirah, Harbour, Sea, Skydive

1102, 1202, 1302, 1402, 1502, 1602, 1702, 1802, 1902, 2002, 2102, 2202, 2302, 2402, 2502, 2602, 2702, 2802, 2902, 3002, 3102, 3202

Disclaimer: 1. All dimensions are in metric, measured to wall finishes. 2. All materials, dimensions & drawings are approximate. 3. Information is subject to change without notice, at developer's absolute discretion. 4. Actual area may vary from the stated area. 5. Drawing are not to scale. 6. All images used are for illustrative purpose only and do not represent the actual size, features, specifications, fittings and furnishings. 7. The developer reserves the right to make revisions/ alterations, at its absolute discretion, without any liability whatsoever.

# 3 BEDROOM APARTMENT

TYPE A (with maid room and powder room + balcony)

**TOTAL SALEABLE AREA**

SUITE = 1,852.47 SQ.FT.

BALCONY = 176.53 SQ.FT.

TOTAL = 2,029.00 SQ.FT.



TYPICAL FLOOR PLAN  
LEVEL 11-32

**3 BED**

**SIZE:** 3515 - 4186 sq. ft.

**PRICE:** From 16.17M - 27.48M\* AED

\*Subject to availability



List of unit numbers with this unit plan:

## IEWS

Blue waters, Ain Dubai, Palm Jumeirah, Harbour, JBR Beach, Sea, Marina Skyline, Skydive 1101

Blue waters, Ain Dubai, Palm Jumeirah, Harbour, JBR Beach, Marina, Sea, Marina Skyline, Skydive 1201, 1301, 1401, 1501, 1601, 1701, 1801, 1901, 2001, 2101, 2201, 2301, 2401, 2501, 2601, 2701, 2801, 2901, 3001, 3101, 3201

Disclaimer: 1. All dimensions are in metric, measured to wall finishes. 2. All materials, dimensions & drawings are approximate. 3. Information is subject to change without notice, at developer's absolute discretion. 4. Actual area may vary from the stated area. 5. Drawing are not to scale. 6. All images used are for illustrative purpose only and do not represent the actual size, features, specifications, fittings and furnishings. 7. The developer reserves the right to make revisions/ alterations, at its absolute discretion, without any liability whatsoever.

## 6 BEDROOM

(with gym + home theatre + office + pool + sauna + powder room + wine room + maid room + store)



## 6 BED PENTHOUSE

**SIZE:** 16 205 - 24 399 sq. ft.

**PRICE:** From 105.33M - 158.59M\* AED

\*Subject to availability



lynn@bconnectglobal.co  
jayd@bconnectglobal.co  
+27 83 655 5539



**36 Years of Property Excellence & Over 270 Unique Developments.**  
Innovative in our thinking. Dynamic in our approach and evolutionary in our achievements

**SOBHA**

AVAILABILITY & PRICES ARE SUBJECT TO CHANGE