

REMOVING
BOUNDARIES
FOR GLOBAL
PROSPERITY

STARTING AT
AED 3.1M

SOBHA SEAHAVEN



OVERVIEW



ABOUT

Sobha Marina Tower at Dubai Harbour is the latest residential towers, developed by Sobha Group offering 1, 2 & 3 bedroom apartments, lined with exclusive facilities. The three facades with the highest of them is 67 story that rises in the sky offering awe-inspiring views of the community and its neighborhood.

People will have access to a one-of-a-kind and impeccable mix of luxury and convenience thanks to the fact that each individual unit in the project has been meticulously built using the most up-to-date design principles. Each unit has been outfitted with high-quality fittings and fixtures throughout the design process.

THE BENEFITS



Plan B

Expats can reside in the UAE, one of the wealthiest and most prosperous countries worldwide. They also can travel to the country anytime.



Investment

UAE is considered a tax-free investment country. Investment in Dubai real estate will never trick you with annual property tax, income tax, capital gains tax, rental revenue tax, or Value added tax.



Health & Education

Having the Golden Visa allows you study in some of the best colleges in the UAE, also offering cheaper world class medical access.

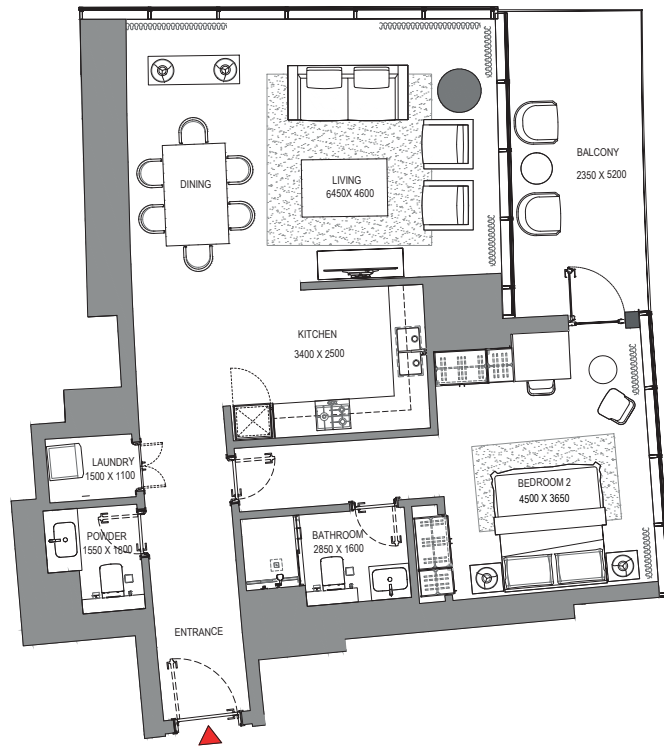
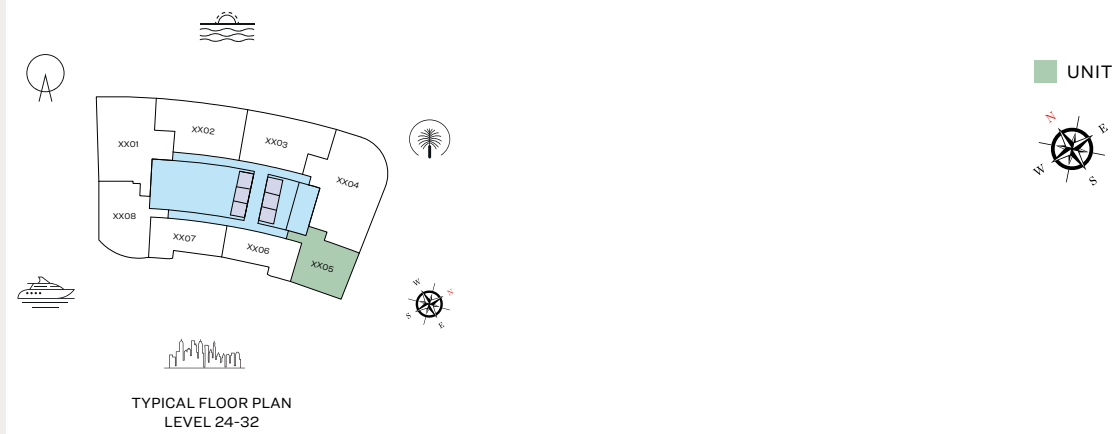
GET IN TOUCH

M : +27 83 655 5539
E : info@bconnectglobal.co

ONE BEDROOM

TYPE C WITH POWDER ROOM + BALCONY

SUITE 969.61 SQ FT
 BALCONY 136.49 SQ FT
TOTAL COV. AREA 1,106.10 SQ FT



List of unit numbers with this unit plan:

VIEWS

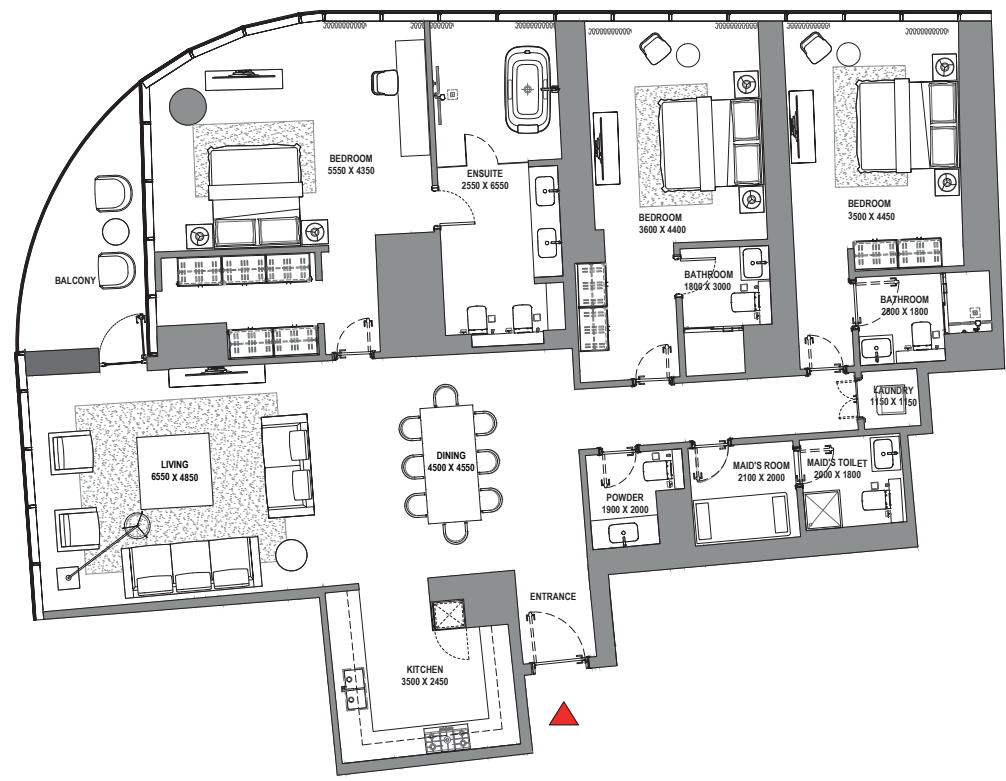
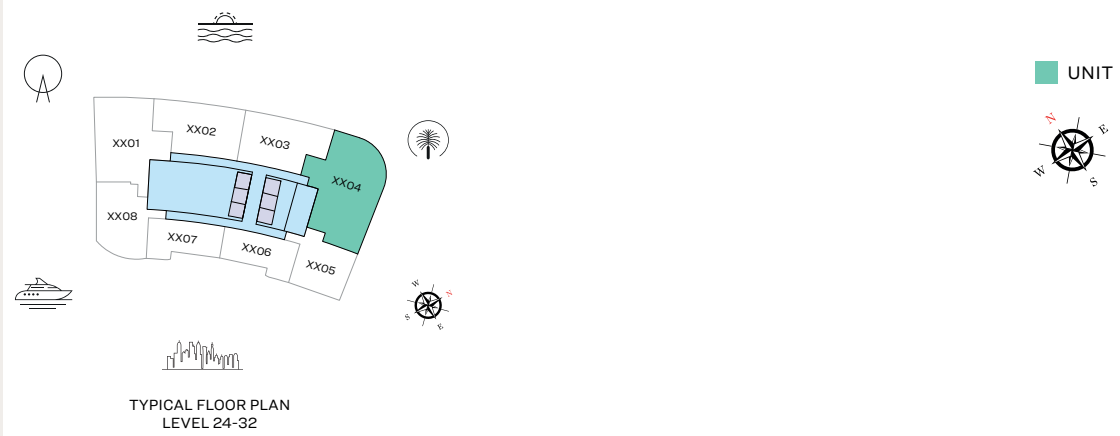
Marina, Marina Skyline
 2405, 2505, 2605, 2705, 2805, 2905, 3005, 3105, 3205

Disclaimer: 1. All dimensions are in metric, measured to wall finishes. 2. All materials, dimensions & drawings are approximate. 3. Information is subject to change without notice, at developer's absolute discretion. 4. Actual area may vary from the stated area. 5. Drawing are not to scale. 6. All images used are for illustrative purpose only and do not represent the actual size, features, specifications, fittings and furnishings. 7. The developer reserves the right to make revisions/ alterations, at its absolute discretion, without any liability whatsoever.

SUITE 2,338.89 SQ FT
 BALCONY 119.16 SQ FT
TOTAL COV. AREA 2,458.05 SQ FT

THREE BEDROOM

WITH MAID ROOM+ POWDER ROOM + BALCONY



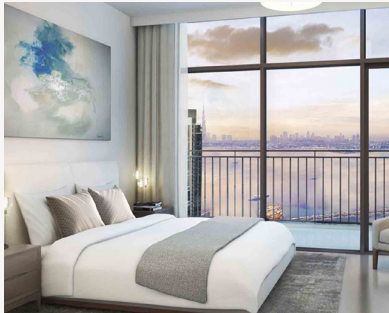
List of unit numbers with this unit plan:

VIEWS

Palm Jumeirah, Harbour, Sea, Skydive
 2404, 2504, 2604, 2704, 2804, 2904, 3004, 3104, 3204

Disclaimer: 1. All dimensions are in metric, measured to wall finishes. 2. All materials, dimensions & drawings are approximate. 3. Information is subject to change without notice, at developer's absolute discretion. 4. Actual area may vary from the stated area. 5. Drawing are not to scale. 6. All images used are for illustrative purpose only and do not represent the actual size, features, specifications, fittings and furnishings. 7. The developer reserves the right to make revisions/alterations at its absolute discretion, without any liability whatsoever.

The information, plans, artist impressions and photographs in this document are for guidance purposes only and do not constitute a representation or an offer to treat. The Developer reserves the right to effect changes as they might deem appropriate- prior to contract.



**SEAHAVEN
MARINA**
APARTMENT
1, 2 & 3 Bedrooms
PRICES (AED) FROM: **3,100 000**



CONTACT US

M : +27 83 655 5539 | E : info@bconnectglobal.co